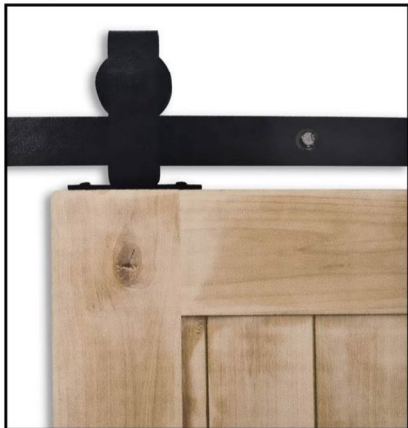


# Barn Door Hardware Kit

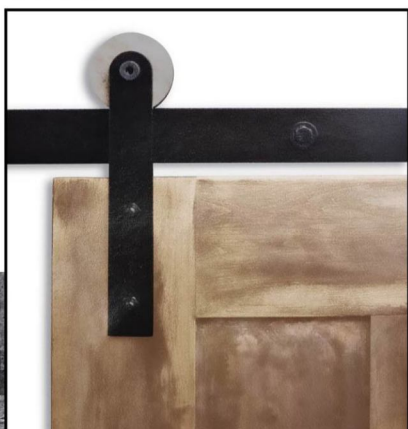
*Industrial*







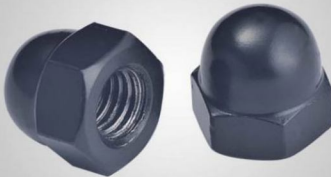



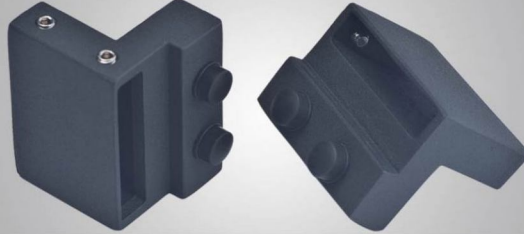

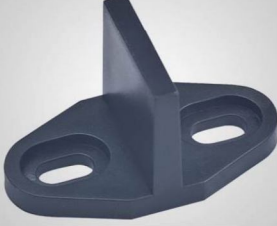

*Top Mount Industrial*

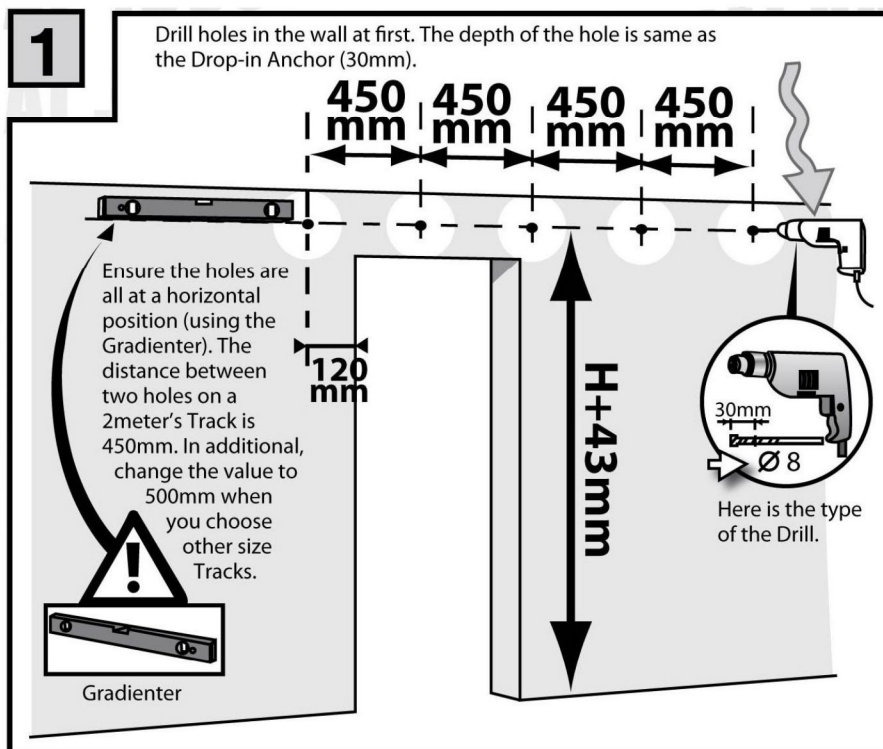
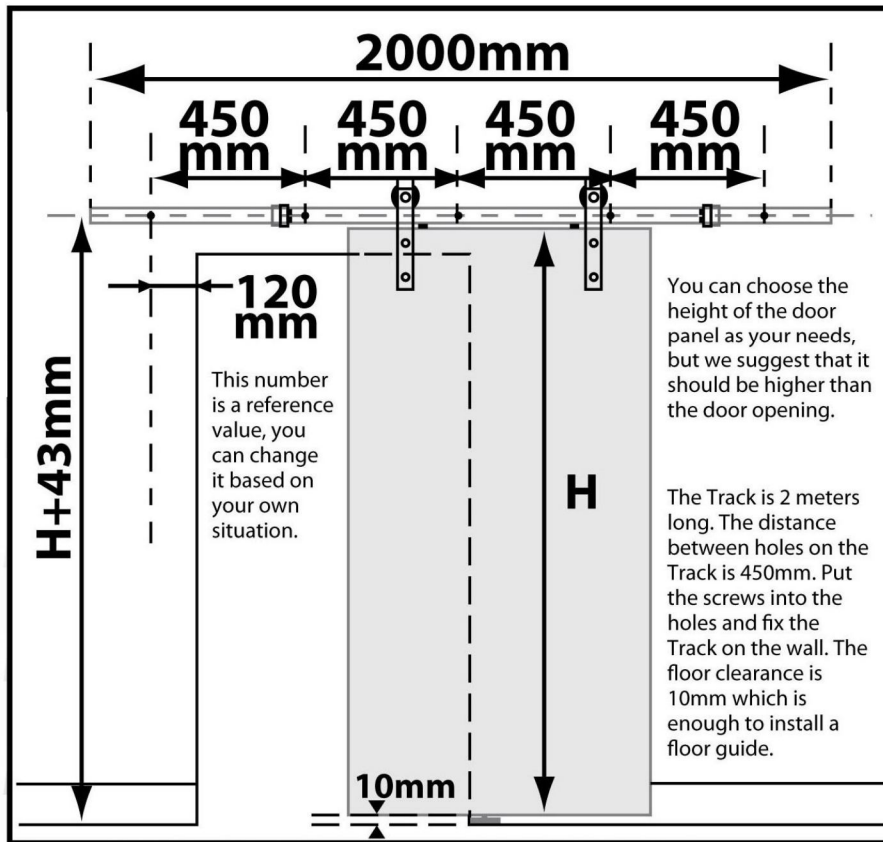


*Modern*



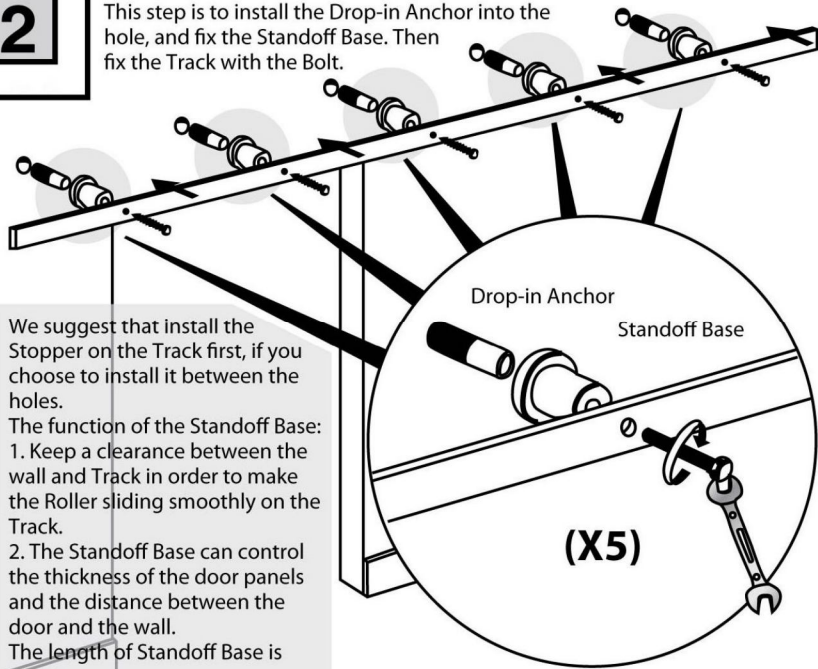
Item No.	Picture	Item name	Unit	QTY.	Material
1		Flat Sliding Track	pc	1	Carbon Steel
2		Standoff Base	pc	5	Cast Iron
3		Drop-in Anchor M8x30	pc	5	Carbon Steel
		Washer ø8	pc	5	
		Bolt M8x60	pc	5	Carbon Steel
4		Roller	pc	2	Carbon Steel
5		Bolt M10	pc	4	Carbon Steel
6		Nut M10	pc	4	Carbon Steel

Item No.	Picture	Item name	Unit	QTY.	Material
7		Washer ø10	pc	8	Carbon Steel
8		Stopper	pc	2	Cast Iron
9		Hex Key	pc	1	Carbon Steel
10		Anti-jump Disc	pc	2	Plastic
11		Floor Guide	pc	1	Plastic
12		Expansion Pipe ø8	pc	2	Plastic



**2**

This step is to install the Drop-in Anchor into the hole, and fix the Standoff Base. Then fix the Track with the Bolt.



We suggest that install the Stopper on the Track first, if you choose to install it between the holes.

The function of the Standoff Base:

1. Keep a clearance between the wall and Track in order to make the Roller sliding smoothly on the Track.

2. The Standoff Base can control the thickness of the door panels and the distance between the door and the wall.

The length of Standoff Base is 35mm.

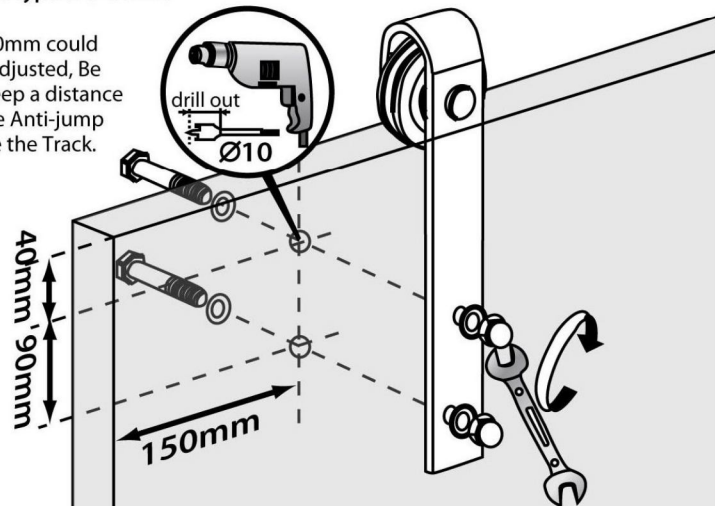
**3**

**(X2)**

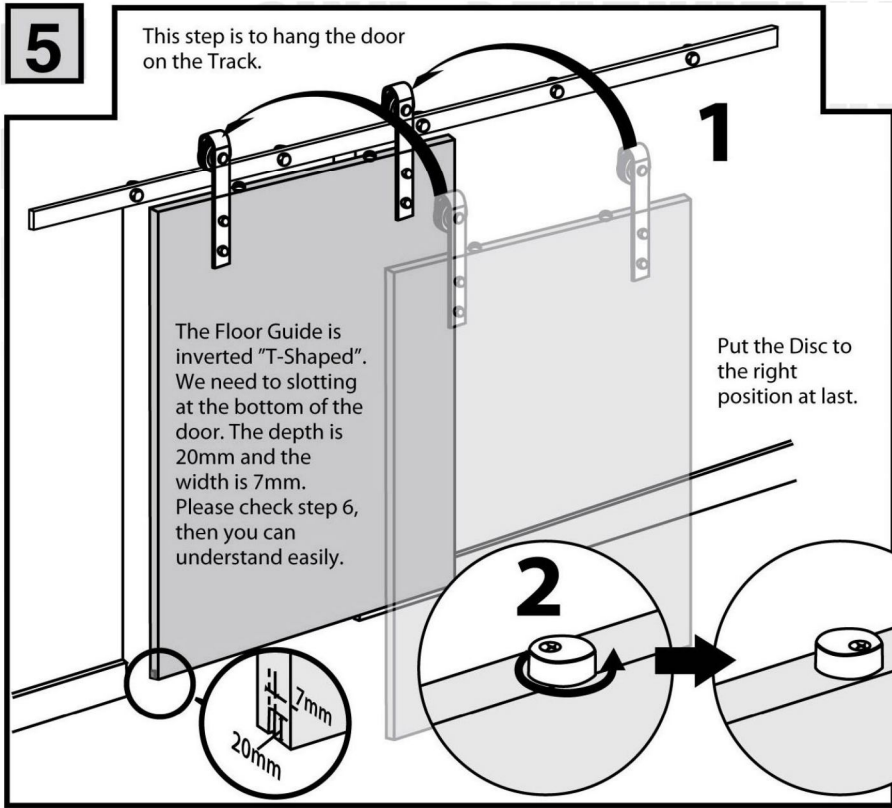
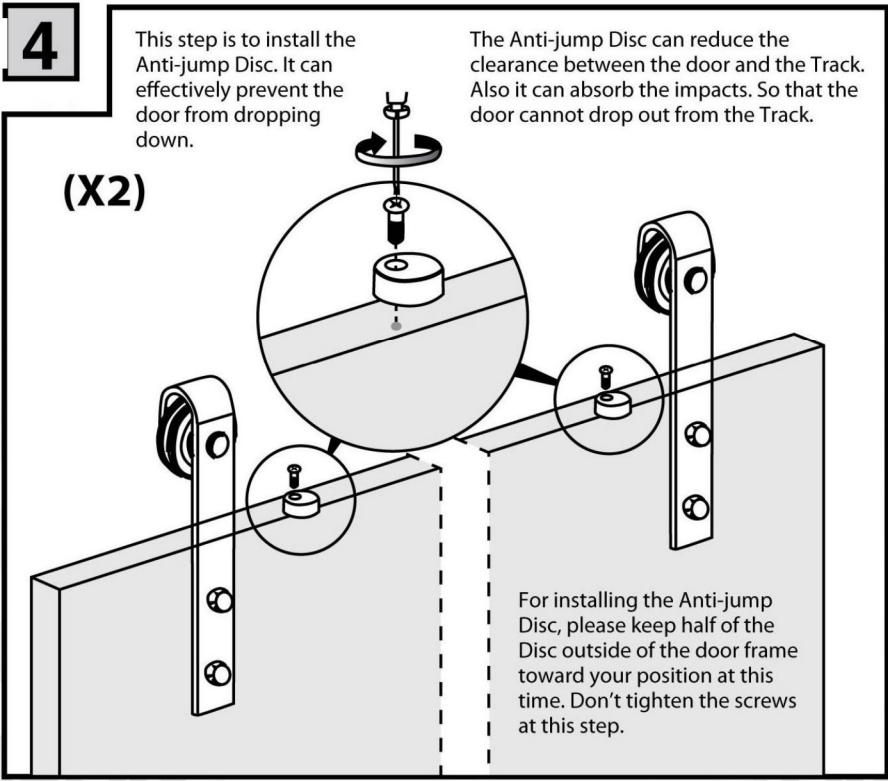
This step is to install the Roller on the door.

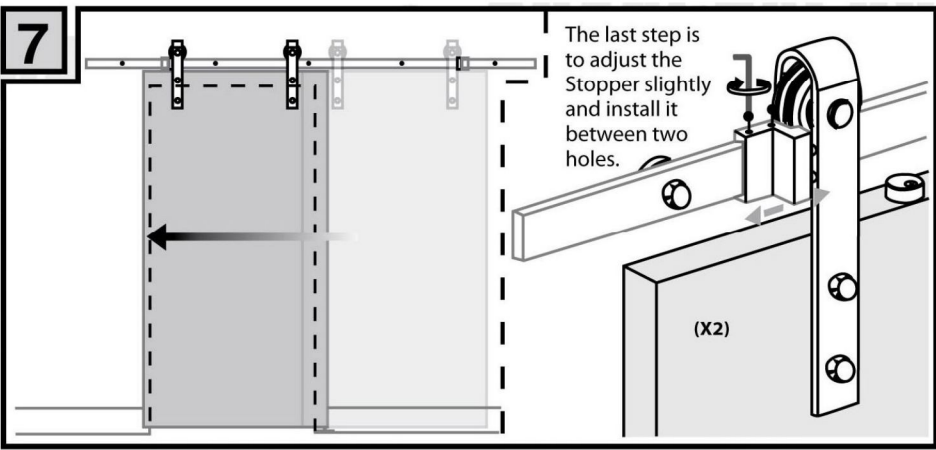
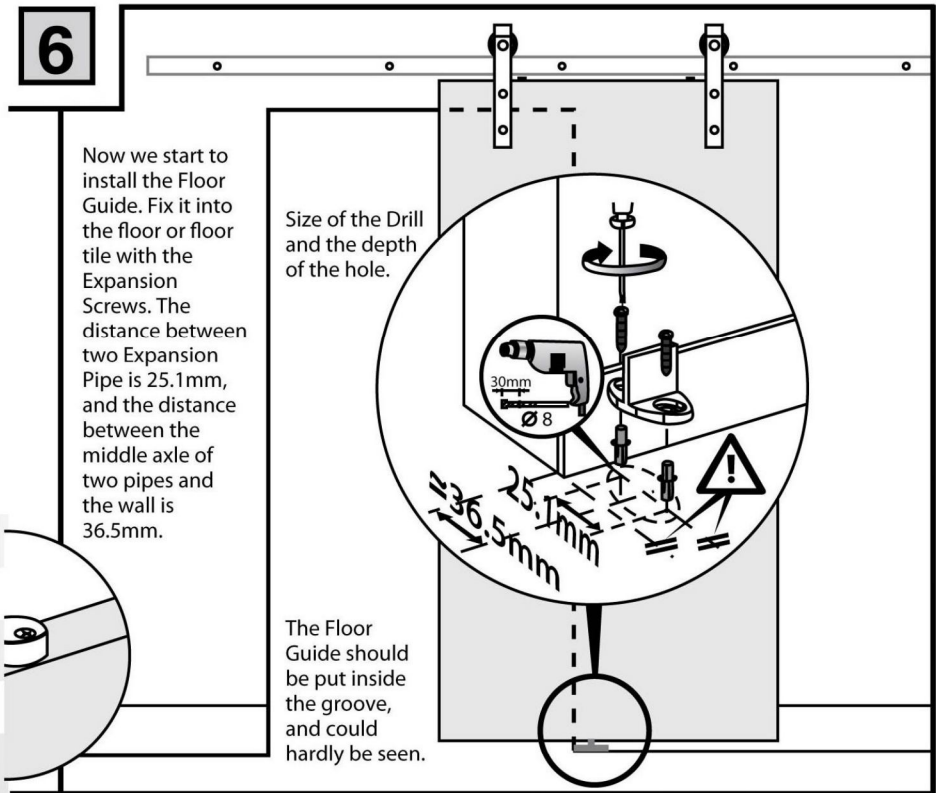
The type of the Drill.

The value 40mm could be slightly adjusted, Be careful to keep a distance between the Anti-jump Disc and the the Track.



The distance from the hole to the door edge is 150mm, you can adjust it according to your needs.





**End**

# The Types of Roller

which is available for you to choose



Mini Ultra Modern



Mini Industrial



Mini modern



Mini Arrow



Mini Top Mount Modern



Mini Top Mount Ultra Modern

